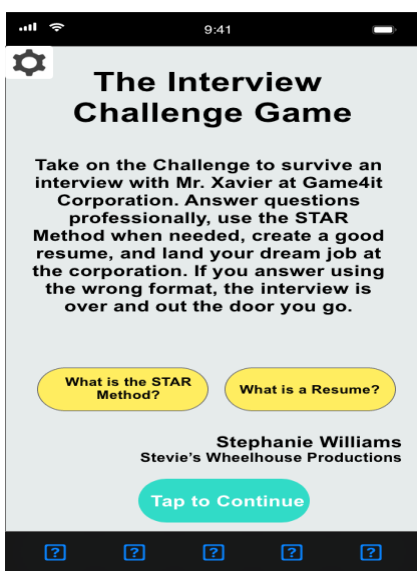




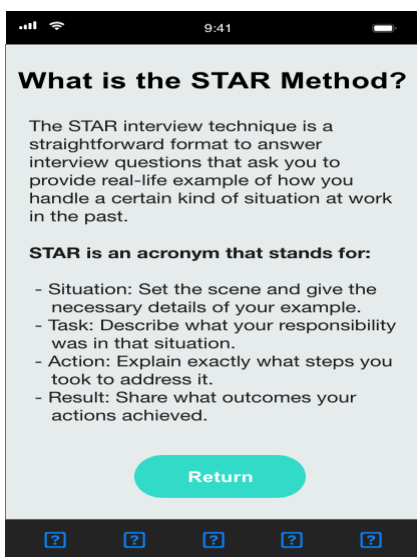
This screenshot is the main page for the game. Music will play and the player will press the play button to learn more about the game.



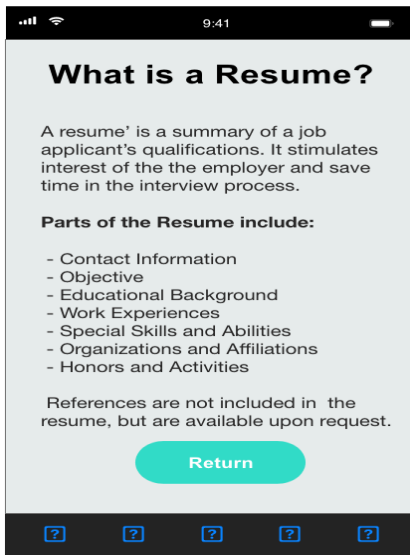
This screenshot is the Introduction and Instructions page of the game. To review the STAR Approach and parts of a resume, buttons are included for more information.

The Setting icon goes to the sound, support, share, and music page. The references link is also included. The setting icon will be found many of the pages.

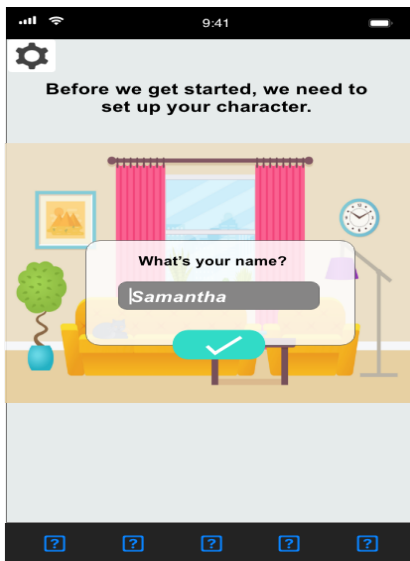
When the player presses the "Tap to Continue" button, it leads them to creating a name for their character.



This screenshot the page that is linked to the instruction page just mentioned to give more information on the STAR method when answering interview questions.

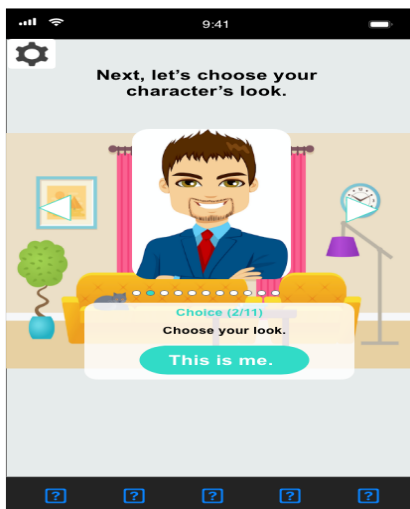


This screenshot the page that is linked to the instruction page just mentioned to give more information about a resume and the parts of a resume.

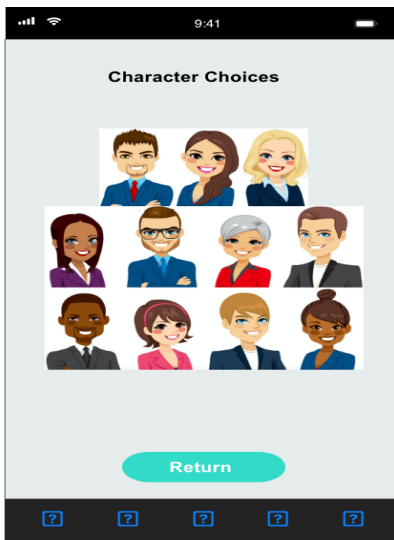


After the player presses the “Tap to Continue” button on the instruction/introduction page, it leads them to creating a name for their character.

The player will click the check mark when they choose their character name.



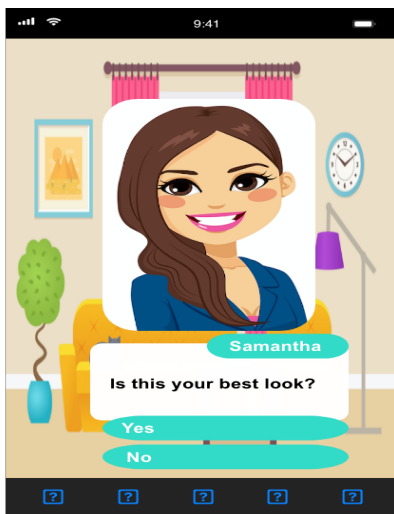
After choosing their name, the player will choose 1 out of 11 characters ready to interview. Once they choose their character, they will press on the button “This is me” to continue.



(This screenshot shows the avatars the player will choose from and is not part of the game.)



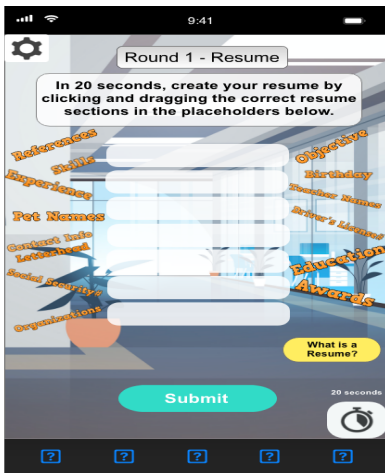
Once the player presses the "This is me" button on the prior screen, You will see the character and name ready to interview and press "Continue."



If the player wants to make a last-minute change about their character, they can press "No" on this screen and return to choose another character. If not, the player will press yes and move to on.



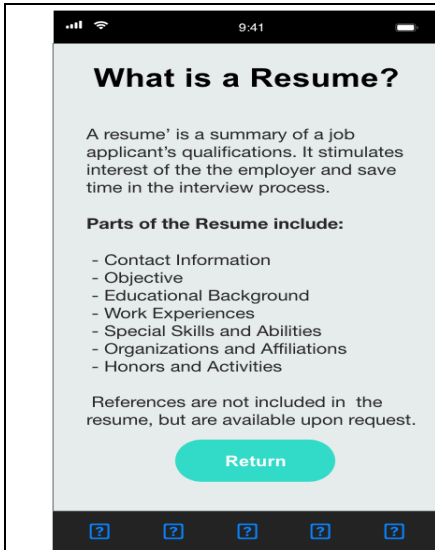
This is the confirmation of the character to move on by pressing "Continue."



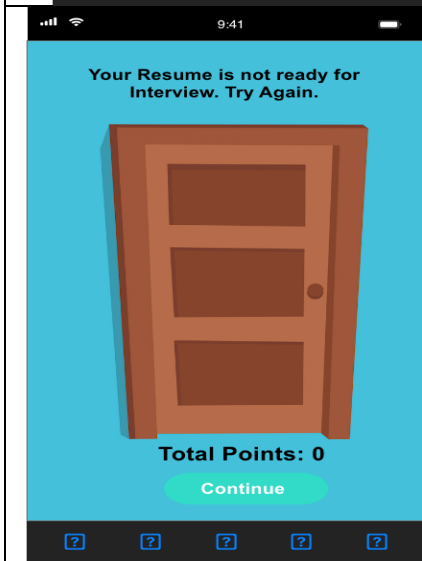
Round 1 is Resume. Players have 20 seconds to choose the parts of a resume and press "Submit." If the clock runs out of time or the player chooses an incorrect section, the game will end with the door closing and no points. If the player answers correctly, they receive 20 points and move to Round 2, the Interview. There is resume help on this page if needed and a timer.



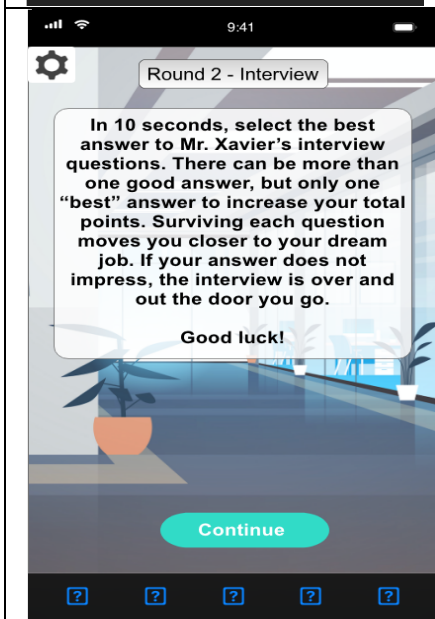
This is a screenshot of reward for completing the resume round.



This is a screenshot of resume information to help in the process. I also linked at the beginning of the game on the instruction page. This return button returns to the resume portion of the game.



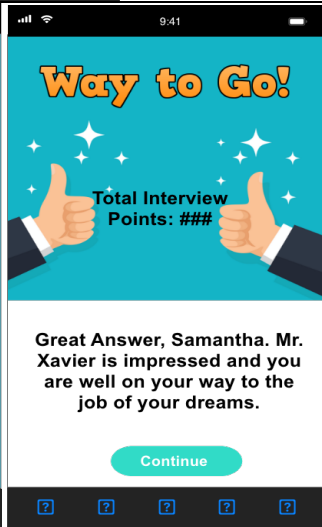
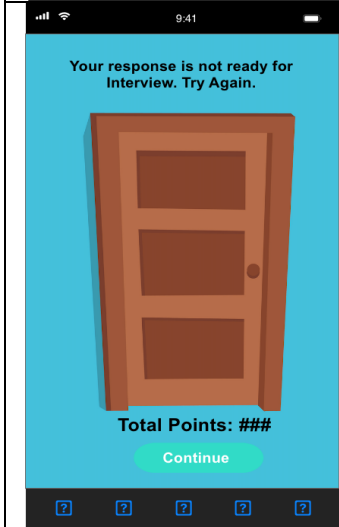
If the player answers incorrectly or the timer ends before the mission is complete, the player will have the door closed on them and they will have to start again at the beginning of Round 1 – Resume.



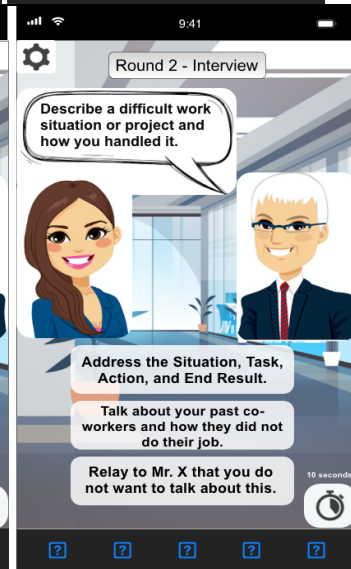
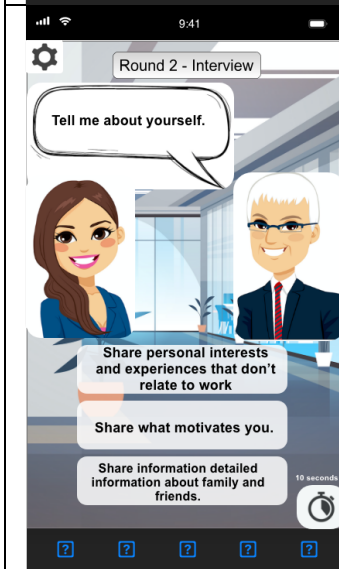
After successfully completing Round 1, Round 2 will start Interview questioning with Mr. Xavier at Game4it Corporation. This is an instructional page on how to answer question.



Round 2 Begins. There are five questions that Mr. Xavier asks, and the character/player must answer correctly. The player presses a response for the result. The best answer will have the most points. The best answer is 10 points and the second is 5 points, One answer will be incorrect and lead to the door being closed and the player starting at the beginning of Round 2 – Interview.



Here is the rewards and punishment routes. “Way to Go” moves you forward to the next question and the door returns you to the beginning of Round 2 – Interview.



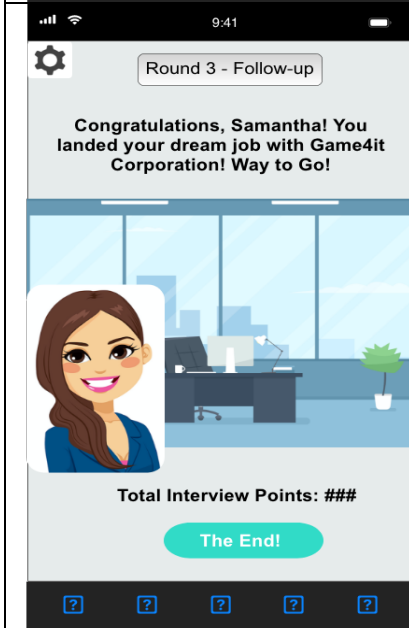
Interview Questions 2 and 3. The player presses a response for the result.



Interview Questions 4 and 5. The player presses a response for the result.



After completing the interview, we look at ways to follow-up. There is no wrong answer here. All answers lead to 10 additional points.

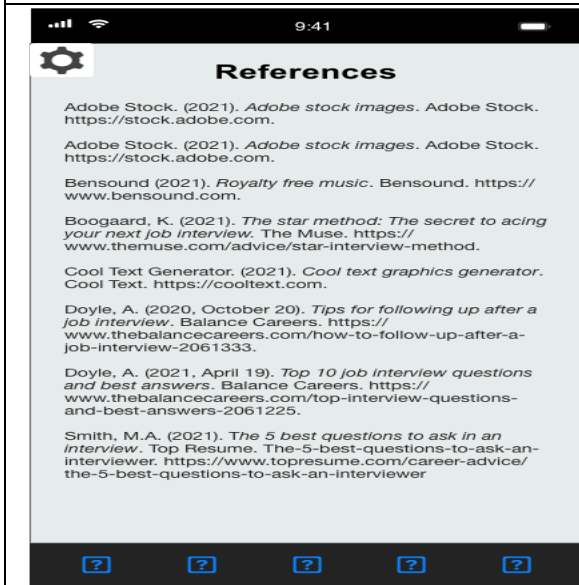


If the player reaches Round 3 - Follow-up, The player has won the game and landed a job and office at Game4it Corporation. Total points will be calculated. A perfect game will be 80 points. Pressing "The End" will take the player back to the main page.

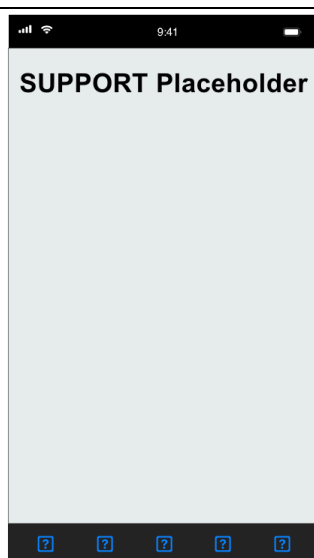
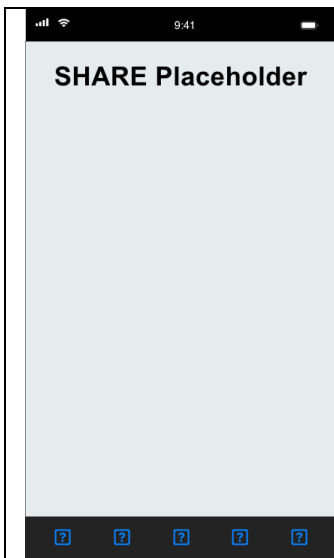




This a screenshot of the settings page. The setting icon on each page takes you here. The sound, support, share, and music selection are on this page. The references link is also included. The setting icon will be found many of the pages.



Here is a screenshot of the reference page linked to the settings page.



These are placeholders for sharing the game link to others on different social mediums and a support email placeholder if players are having trouble playing the game.



